



**PLUGPLUG**

**GRAVEL CAMP FINLAND  
22-28 JULI 2024**

**-SLECHTS 20 PLAATSJES-**



FINLAND  
THE COUNTRY OF  
30 000 LAKES



...and 85 000km of gravel roads

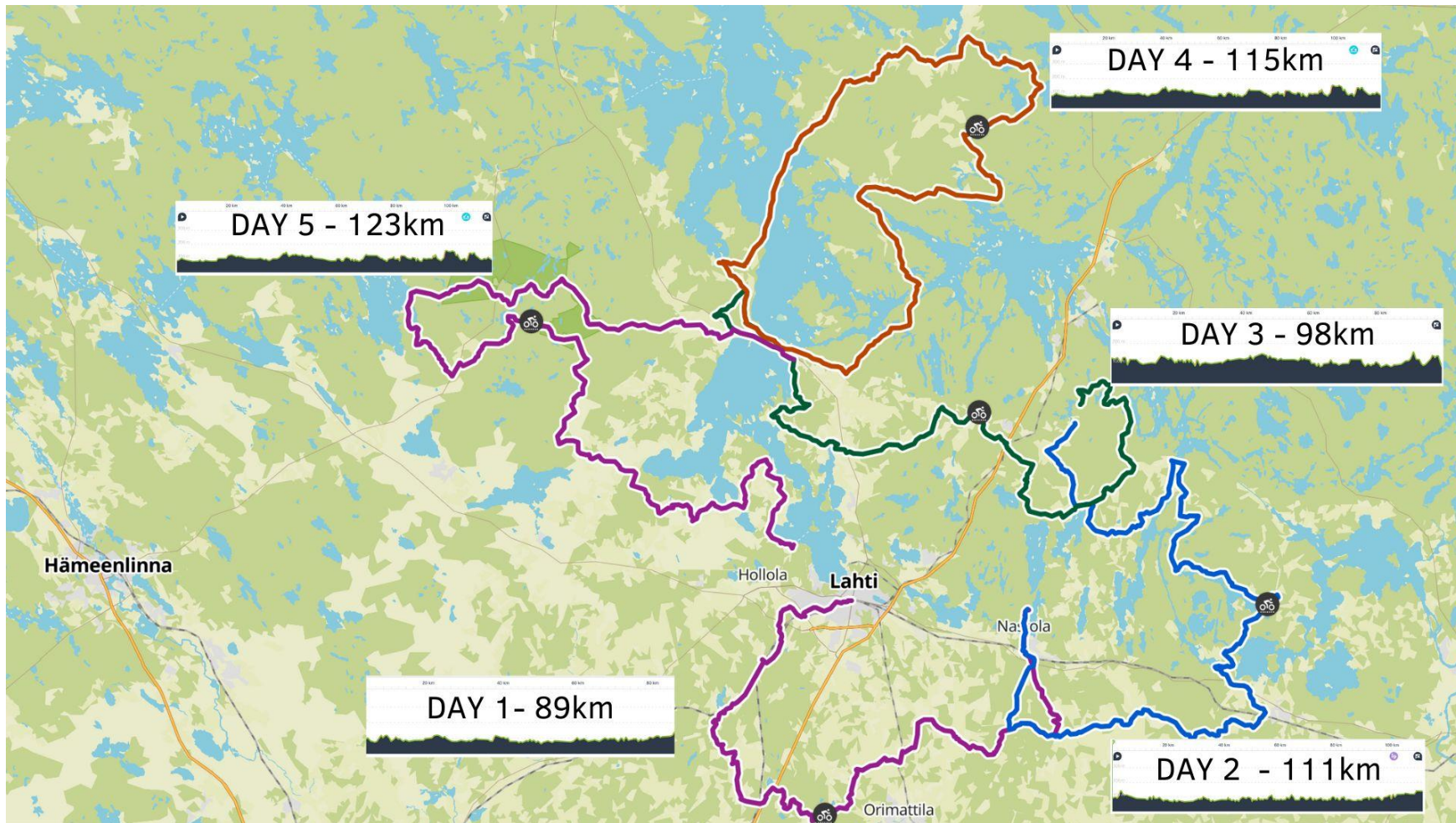


Salpausselkä Geopark Gravel Lahti



# Route

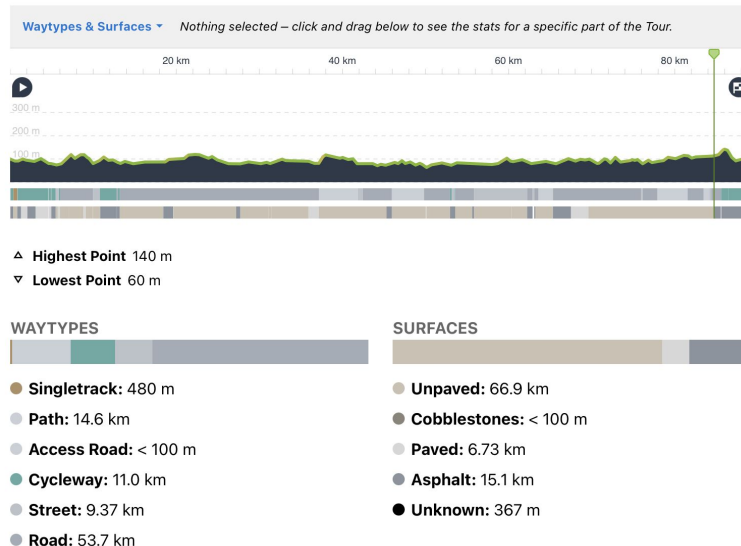
- 6 day route with ~100km/day distances + return day
- Point to point with support
- 80% gravel roads of which 60% smooth scenic gravel roads
- Lakeland experience

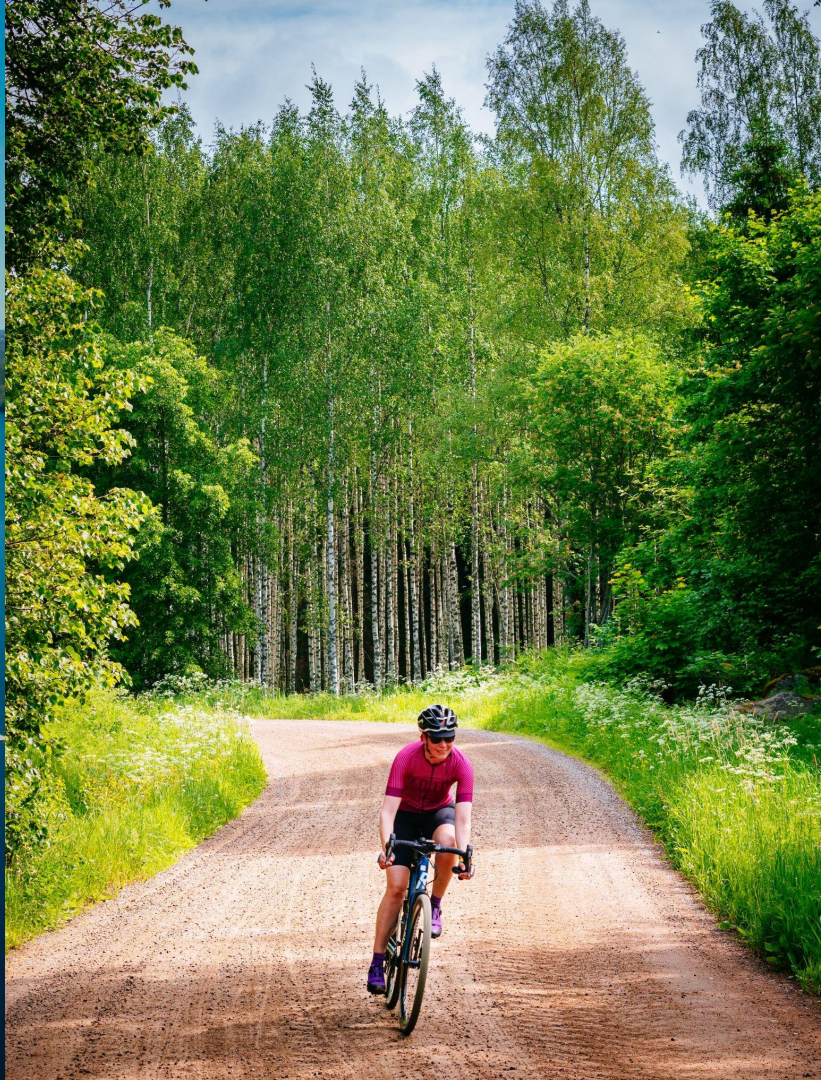


# Day 1 - Lahti-Pajulahti

- Transfer of participants from Helsinki by train
- 89km - 700hm
- Gravel and forest roads
- Accommodation at Pajulahti, spacious rooms
- Lake view dining, lake swimming and sauna (separated saunas)

## TOUR PROFILE

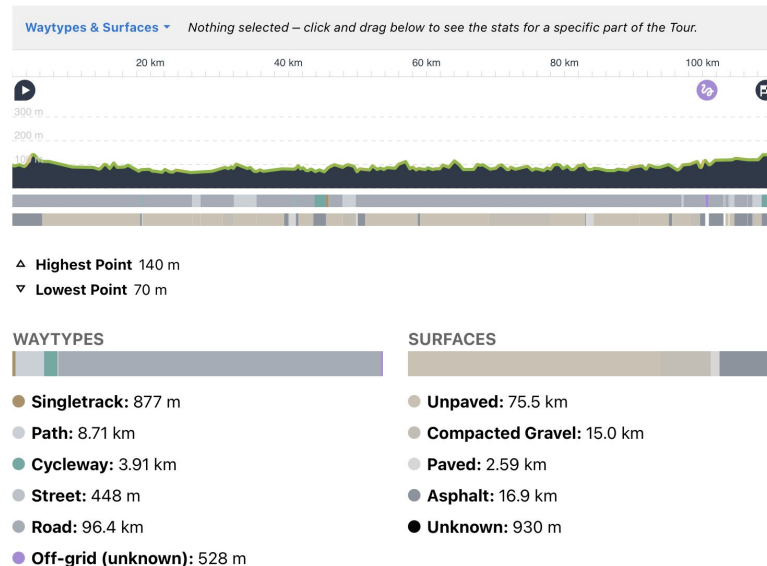




# Day 2 - Pajulahti -Vierumäki

- 111km - 1400hm
- Gravel and forest roads
- 60km of Falling Leaves Lahti roads
- Accommodation at Vierumäki, rooms or cottages
- Lake swimming, resort restaurant

## TOUR PROFILE

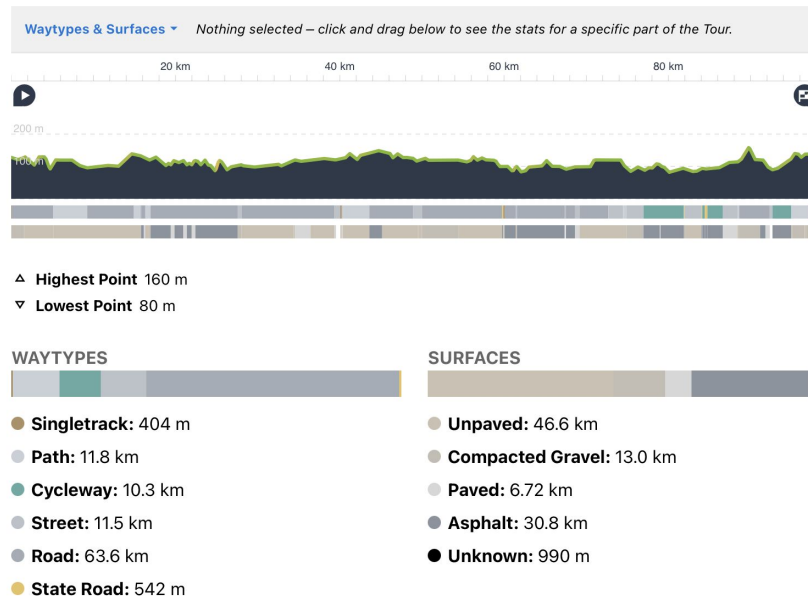


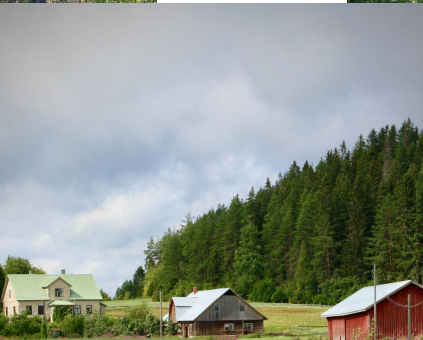


# Day 3 - Vierumäki-Asikkala

- 98km - 900hm
- Gravel and forest roads
- Vääksy Canal
- Hotel with swimming beach and saunas
- Hotel restaurant

## TOUR PROFILE

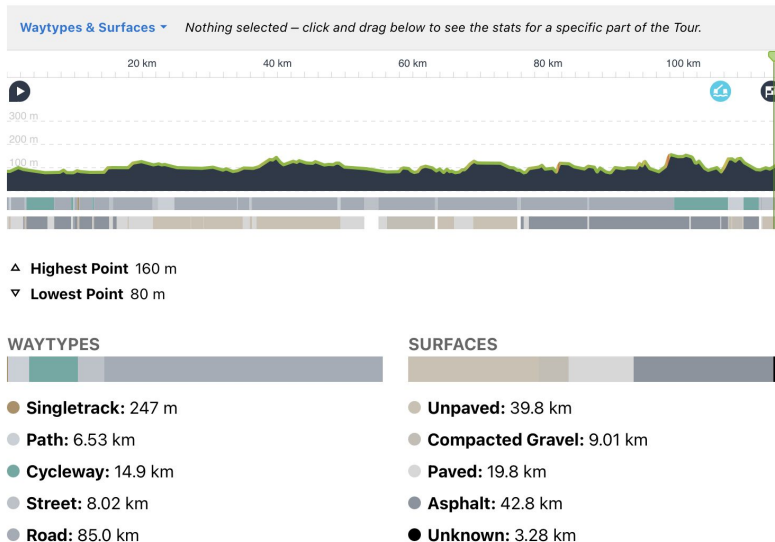




# Day 4 - Asikkala - Asikkala

- 115km - 1200hm
- 40% asphalt - includes the Pulkilanharju bridge.
- Hotel with swimming beach and saunas
- Hotel restaurant

## TOUR PROFILE

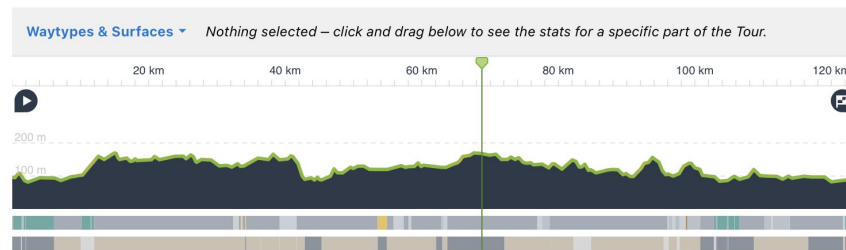




# Day 5 - Asikkala - Siikaniemi

- 123km - 1600hm
- Gravel and forest roads
- Crossing the Evo National Park
- Accommodation with lakeside view, swimming and sauna

## TOUR PROFILE



▲ Highest Point 170 m

▼ Lowest Point 80 m

### WAYTYPES



● Singletrack: 488 m

● Path: 8.41 km

● Access Road: < 100 m

● Cycleway: 11.8 km

● Street: 8.82 km

● Road: 92.4 km

● State Road: 1.51 km

### SURFACES



● Unpaved: 84.0 km

● Paved: 6.02 km

● Asphalt: 33.4 km

● Unknown: 124 m



# Day 6 - Siikaniemi - Lahti

- 25-60km - 300-600hm
- Gravel and forest roads
- 30 km FNLD GRVL event roads
- Arrival at Lahti harbor for lunch
- Return to airport from Lahti railway station - 14:00h

# Rental Fleet Bikes

- BMC URS carbon - XS to XL - 10 bikes
- BMC URS AL alloy - XS to XL - 8 bikes
- BMC Kaius carbon - 51-58 - 4 bikes
- Cannondale SuperSix EVO SE - 54-56 - 2 bikes
- BMC Alpenchallenge (flat bar hybrid bikes) - S to L - 4 bikes
- E-gravel + hybrid bikes - S,M,L- 4 bikes
- Professional mechanic support on our tours



